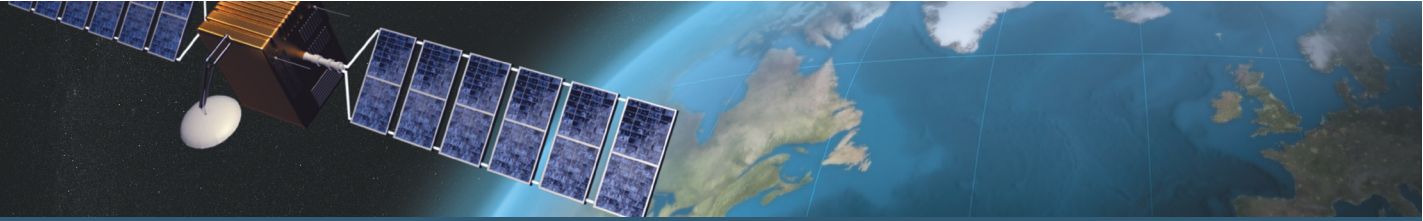




Marinestar® Manoeuvring System



The Marinestar® system provides important information during berthing manoeuvres, including approach speeds, rate of turn and even distances to the berth.

Precision Berthing System

A GNSS Berthing Aid

The Marinestar® system provides important information during berthing manoeuvres, including approach speeds, rate of turn and even distances to the berth.

Berth positions are input from an electronic chart or selected from a database of previously visited locations. The Marinestar® system displays distances to the quay-side measured from fore and aft points on the vessel, together with approach speeds. Record the position when alongside for improved accuracy at the next visit.

Complete Flexibility

Marinestar® aids vessels approaching Mediterranean and L-shaped berths, as well as standard alongside positions.

For vessels returning to a precise point on the quay-side (such as cruise ships or tankers), Marinestar also displays fore and aft distances.

Fast, Safe and Efficient

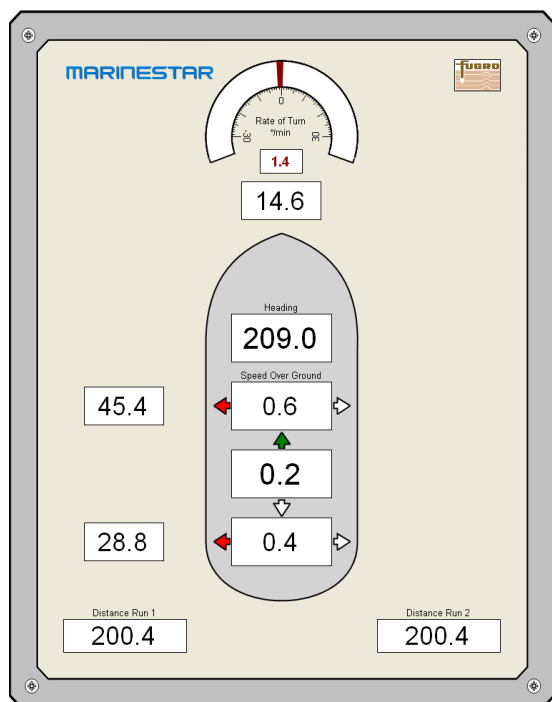
With very precise approach speeds and quay distances measured with decimetre precision, Marinestar® berthing manoeuvres are safer and more likely to be incident-free.

A faster berthing process saves time (up to 15 minutes) and fuel whenever the vessel comes alongside with Marinestar®.



MARINESTAR®

Marinestar® Manoeuvring System



Clear and Easy to Use

Using the Marinestar® berthing system requires minimal training.

A Fugro database of ports and named berths is expanded with new information every time the system is used.

Marinestar® automatically detects the nearest port, and the pre-planned destination berth.

Distances to the quay-side are displayed during approach as soon as the vessel closes to a reasonable distance.

The Marinestar® display shows approach speeds, heading and rate of turn as well as berthing distances, all together on one display.

Quay Drift Alarm

Once alongside, Marinestar® keeps watch on the vessels position. If any point on the vessel drifts away from the quayside by more than some pre-set distance, an alarm will show (and sound) to warn the crew.

Speech Synthesis

During berthing manoeuvres attention is often divided between many different controls and instruments.

Marinestar® helps by speaking the distances to the quayside, so that the operator does not need to keep checking the display visually.

Spoken quay distances are fully configurable. The feature can be turned on or off as required, and the interval between instructions is set by the operator.

Berthing Data Updates

Users of the Marinestar® berthing system continually update and accumulate information about different ports and berths.

This information can easily be shared with other ships and with Fugro by email, keeping all users up to date with the latest new information.



CAIM
SINCE  1945

Pho: +39 010 542304 | Email: digital@caim.it | www.caim.it